

# SD-Analytics Cloud Platform

Network & Application **Visibility + Reporting**

## Network Problems

Leading industry research highlights Networks will see a 28% compound annual growth rate for bandwidth. While 50% of application deployments will suffer performance impact due to networking limitations. There will be a three-fold increase in security attacks year over year.

Therefore, more important than ever, network visibility and control, predictability, adaptability and a feedback loop based on analytics data is a necessity for a trouble free and secure network.

## See Everything & Solve Problems

A strong analytics solution increases both the degree of seeing and the degree of timely action. CommandLink Analytics is purpose-built for focused analytics to identify challenge points and get ahead of potential problems covering SD-Routing, SD-WAN, SD-Security, and the SD-locations.

CommandLink Analytics is a rich real-time big data solution that provides visibility and control, base-lining, correlation, prediction and feedback loop into the CommandLink Platform.

# CommandLink

One Partner | 100% Accountability

We provide real-time and historical search, reports on usage patterns, trends, security events, and alerts.

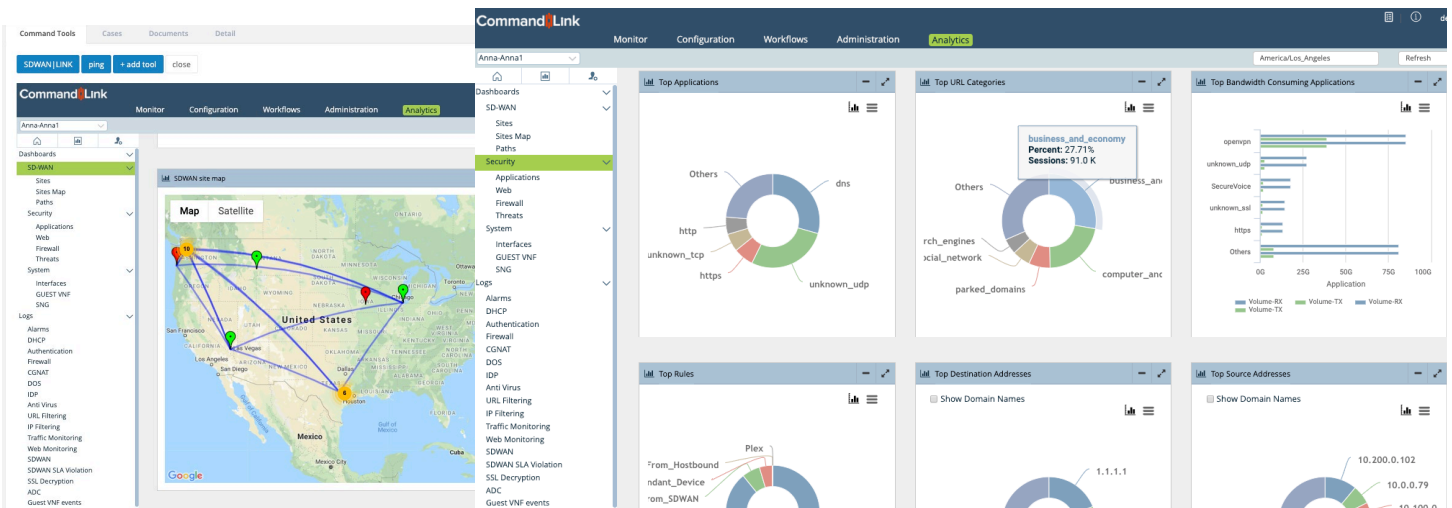
CommandLink Analytics analyzes huge amounts of data sent from the entire network to present critical data points as actionable analytics and reports.

Our platform is operations-ready and supports standard protocols and log formats, such as Syslog and IPFIX, making it compatible with existing SIEM, monitoring, and reporting systems. CommandLink Analytics is extensible and flexible via the Command|API and professional services.

The comprehensive and native capabilities, reduces costs and simplifies deployments and data analysis by reducing the dependency on various 3rd party data analytics platforms such as Solar Winds or others, greatly reducing customer costs and systems management. For multi-vendor environments, CommandLink Analytics interoperates with wellknown performance management applications and 3rd party services. The result is carrier-grade, big data analysis for realizing the full value of your network and applications.

**Analytics is Included with our SDWAN|Link services.**

## Network Routes & Map | Link Performance | Applications | User Data | Security | Threats



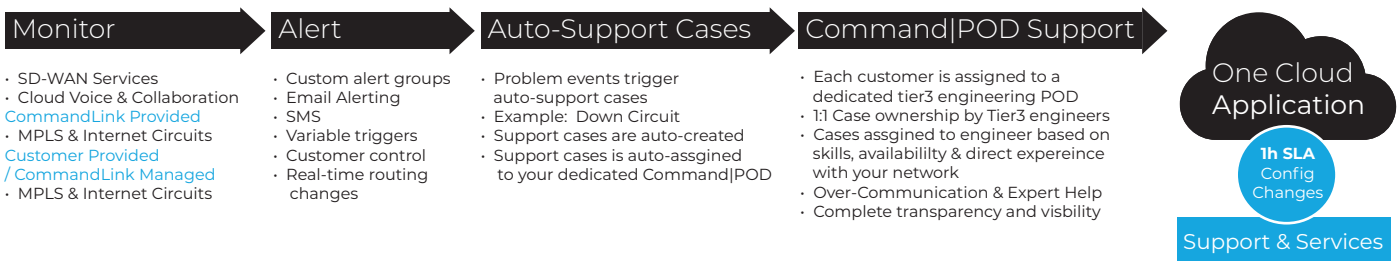
# Analytics Cloud Application Features for SD-WAN Services

Data Logging Framework
Highly scalable, reliable, optimized, policy-driven data logging framework for all services
Multiple transports
Multiple log formats – IPFIX, syslog
Streaming of logs to one or more 3rd party collectors
Reports & Analytics
Real & historical time series log event reporting for various SD-WAN Functions
Traffic usage/protocol anomaly detection through trend lines and confidence band
Prediction-based on extrapolation of trending data
Ad-hoc and scheduled reports
Predefined and custom report templates
Report export formats: csv, pdf, xls, email notification
Search
Multi-column search with drilldown
Generic and custom queries
Correlation searches
Network Reports
Traffic reports per site: availability, bandwidth usage per access circuit, bandwidth usage per application, latency/loss, QoS per access circuit
Multi-site reports: connectivity, bandwidth usage and SLA metrics between sites
CGNAT reports: NAT events, pool utilization etc.

Security Reports
Firewall reports per tenant: top rules, zones, source, destination by IP/domain name/geo location, ports, protocols, session duration, QoS, DDoS and Flood detection
Application reports: top L7 applications by risk, productivity, family and sub-families based on sessions, volume and throughput
Web traffic reports: top web traffic by URL categories and reputation
Threat profile reports: URL filtering and captive portal actions, IDS/IPS, anti-virus, SSL certificate anomalies, etc.
Forensics: packet capture for known/unknown applications and detected vulnerabilities
Anomalies
Support of anomaly detection in traffic pattern/usage
Support for custom applications to detect anomalies and take actions (send traps, program policies, etc.)
GUI
Dashboard views for SD-WAN, security, vCPE functionality per tenant, per Customer VNF (Virtual Network Functions)
Visualization using charts, real-time views, maps, grids
Drilldown support to analyze data instantly for a given time range, detect trends and anomalies
Automatic data enrichment
Flexible reporting framework
Management
Role-based access control + Command API Access
Historical log archival and cleanup

## Integrated Support + Monitoring | Alerting | Auto-Support-Case Creation & Work-Flow

Eliminate reactive support & broken process. Our work-flow unifies support from monitoring of services, to alerting, to directly creating auto-support cases, assignment to Command|POD support tier3 engineers and unifying everything into ONE CLOUD APP.



### About CommandLink

CommandLink empowers enterprises with a transformative digital strategic advantage leveraging our single-source full-stack technology solutions integrated into one cloud application. We build Next-Generation Software-Defined Hybrid Networks (SD-WAN) with integrated managed security, unified with Cloud Communications and Collaboration software, fully integrated into the CommandLink SaaS Platform. Our support is service workflow integrated with monitoring and alerting, auto-support-case creation, and assignment to a dedicated Command|POD team of certified tier 3 engineers backed by 100% uptime SLA options.

For more information, please contact us at [sales@commandlink.com](mailto:sales@commandlink.com) or visit [www.CommandLink.com](http://www.CommandLink.com)